

## Sample Patterns for the Vestments of the Priest

### Alb Pattern

Use: Soft washable white fabric  
White thread for seams and hems

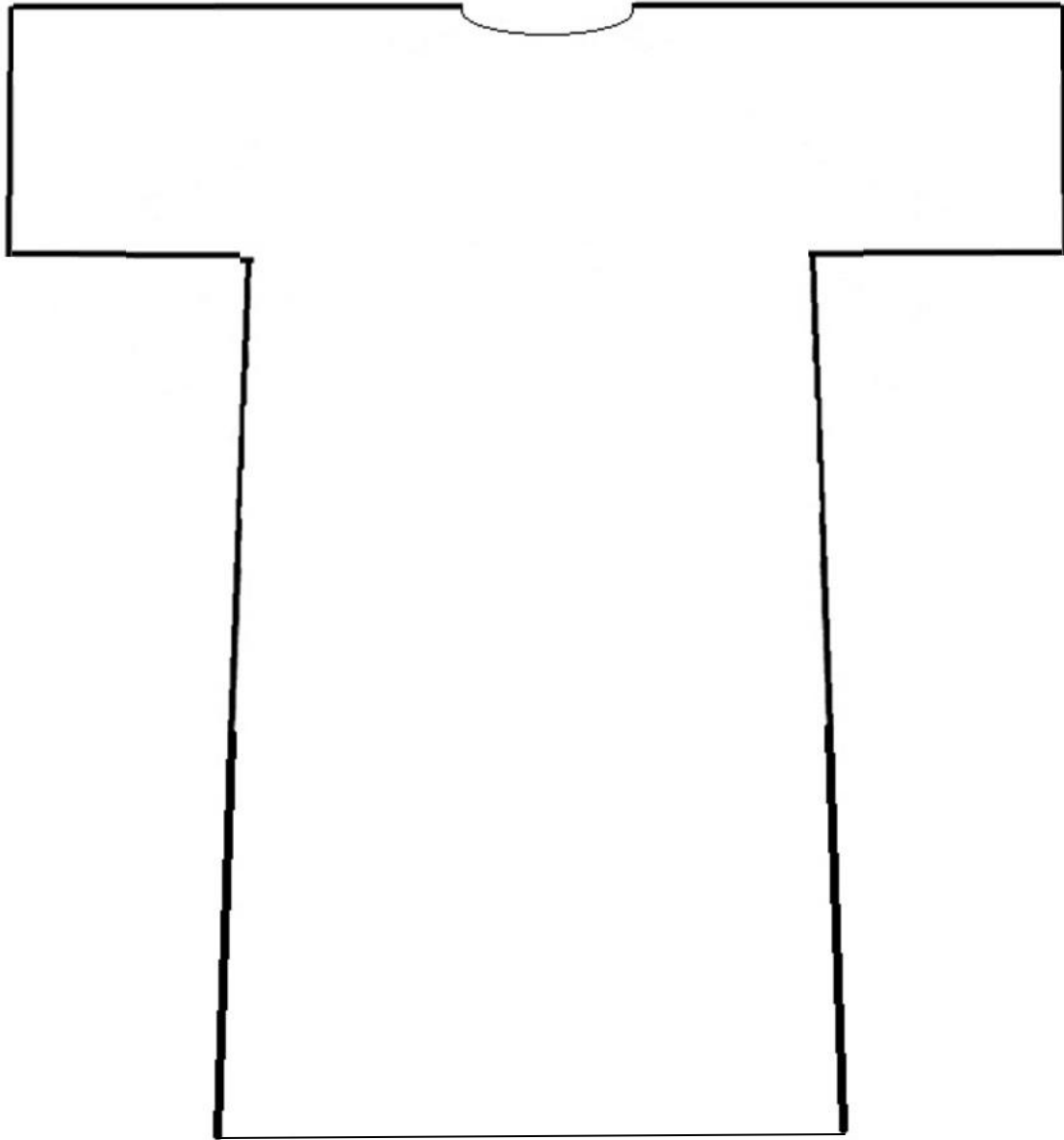
1. Cut the pattern as one piece by lining up the shoulder seams on the fold of the fabric. Cut the fabric approximately  $\frac{1}{4}$  inch larger than the pattern.
2. With right sides together, sew side and arm seams.
3. Roll neck edge and stitch to finish.  
Roll bottom hem and stitch to finish.  
Roll sleeve hems and stitch to finish.
4. Turn the alb right-side-out.
6. Press.

Note:

In Sofia and Gianna's atrium, the alb and vestments of the priest are scaled to fit under the chasuble, as worn by the priest at Liturgy.

If you prefer you may find patterns at your local fabric shop, or invite a member of your community to make a white garment for your atrium.

You may want to make two, so you can have a spare on hand while the other is being laundered.



### Stole Pattern

A stole is a long, narrow band of material several inches wide, worn over the alb.

Use: Fabric that matches the corresponding chasubles (Red, White, Purple and Green).  
Matching thread

One way to make a stole

1. Cut a long, band of fabric twice as wide as the finished stole.
2. Fold the cloth lengthwise.
3. Stitch the long edges together.



4. Turn right-side-out.
5. Press flat, centering the seam in the center of the back.
6. Optional: add trim or a design
7. Stitch closed each of the narrow ends of the stole.

### Cincture Pattern

A cincture is a white lengthy cord, tied at the waist, over the alb. Use a small rope and tie both ends with a knot.